



2024

# ANNUAL STATEMENT OF IMPACT

Lancaster County STEM Alliance (LCSA), funded by The Steinman Foundation, is a nationally recognized STEM ecosystem uniting business, education, and community partners to expand equitable STEM access and prepare the next generation for a dynamic workforce.



# Lancaster County STEM Alliance: Empowering the Future of STEM

## Our Mission & Vision

Connecting learners, educators, and employers to expand STEM opportunities, ensuring Lancaster County attracts visionary job creators, inspires academic excellence, and fosters a prosperous future.

## Key Priority Areas

**K-12 In-School PBL** – Project-Based Learning (PBL) engages students in real-world projects, fostering active learning, critical thinking, collaboration, and problem-solving. Integrating business and community input bridges the gap between classroom learning and career readiness.

**Career Exploration** – Work-based learning and career exploration help individuals discover diverse career paths, gaining insight into required skills, qualifications, and opportunities.

**Out-of-School STEM Learning** – STEM activities beyond the classroom—like after-school programs and camps—enhance learning, spark curiosity, and prepare students for STEM careers.

**DEIB in STEM** – Promoting diversity, equity, inclusion, and belonging in STEM ensures equal opportunities, addresses disparities, and fosters a thriving, inclusive culture.

## Our Commitment to Diversity, Equity, Inclusion, and Belonging (DEIB)

LCSA is devoted to establishing inclusive, equitable spaces where everyone feels respected and can see themselves in STEM careers. Through partnerships, grants, and outreach, we are building a STEM ecosystem where all individuals can thrive.



**LCSA Is a Proud Member Of:**



**Get Involved with LCSA:**  
**LancasterStem.org**

# PARTNERSHIPS FOR PROSPERITY

**\$7,750,259**

Total investment in STEM education  
and workforce development since 2016

**\$1,670,934**

total 2024 investment in  
Lancaster County STEM

## ANNUAL COMMUNITY INVESTMENT IN STEM EDUCATION & WORKFORCE DEVELOPMENT

2016	\$22,000
2017	\$139,333
2018	\$635,133
2019	\$1,014,598
2020	\$967,469
2021	\$963,296
2022	\$970,927
2023	\$1,366,569
<b>2024</b>	<b>\$1,670,934</b>



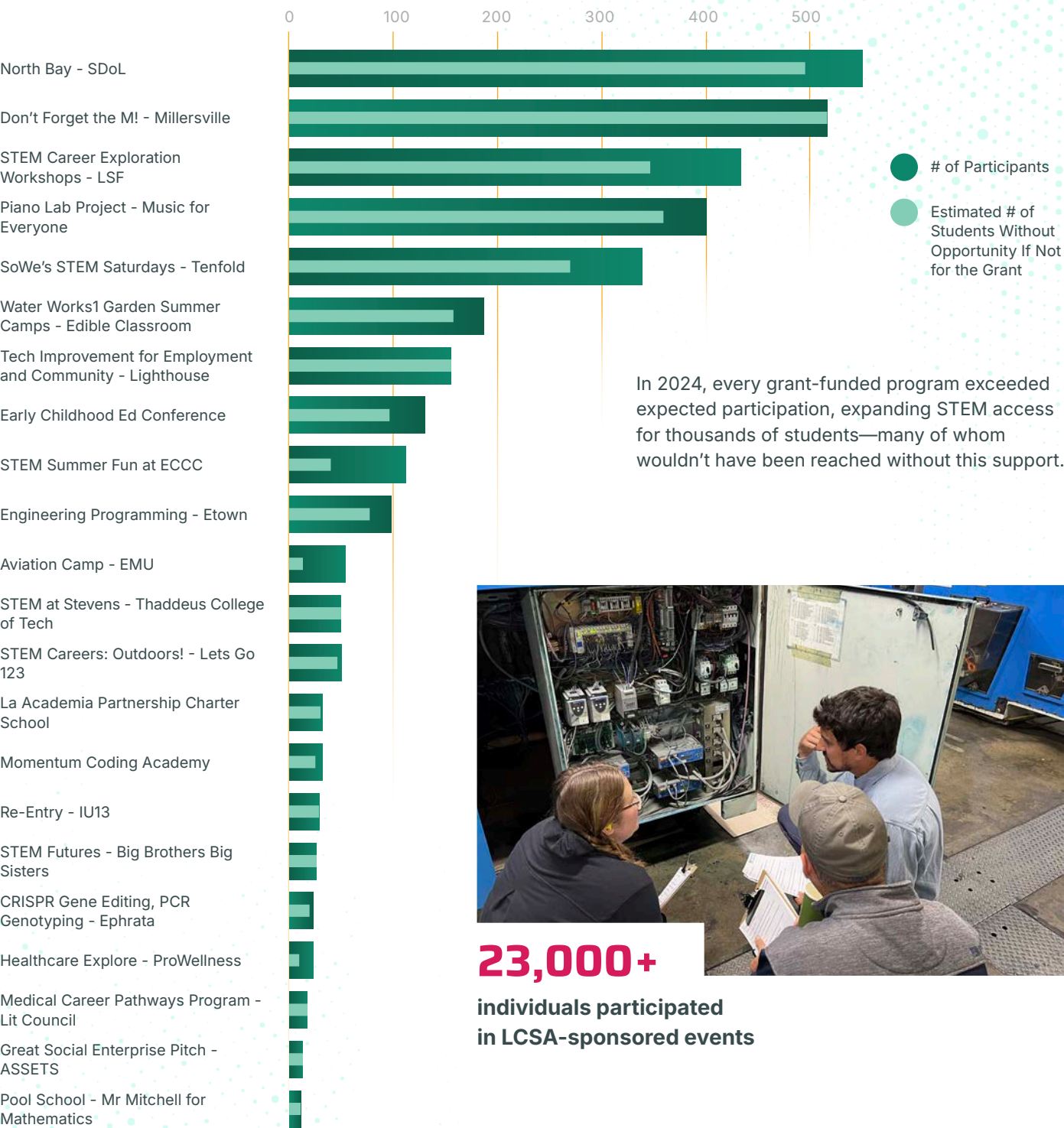
**\$426,000**

awarded in competitive grants  
to community partners

## Partner Organizations Funded Through Principal Programs & Competitive Grants

- ASSETS
- Big Brothers Big Sisters of the Capital Region
- Boys & Girls Club of Lancaster
- Cocalico School District
- Eastern Mennonite University at Lancaster
- Elizabethtown Child Care Center
- Elizabethtown College
- Ephrata Area School District
- GiGi's Playhouse Lancaster
- La Academia Partnership Charter School
- Lancaster Chamber
- Lancaster Science Factory
- Lancaster-Lebanon IU13
- Let's Go 1-2-3
- Lighthouse Vocational Services
- Millersville University
- Music for Everyone
- National Society of Black Engineers
- North Museum of Nature and Science
- Penn State PRO Wellness
- Pennsylvania Society of Biomedical Research
- Plant the Seed of Learning
- Mr. Mitchell for Mathematics
- Precision Cobotics
- Rock Lititz
- School District of Lancaster
- Spanish American Civic Association (SACA)
- Tenfold
- Thaddeus Stevens College of Technology
- The Edible Classroom
- The Literacy Council of Lancaster-Lebanon

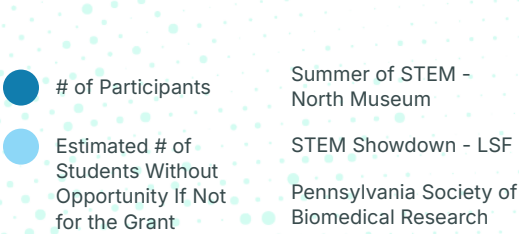
# Grant Funding Drove Programs Beyond Expectations



In 2024, every grant-funded program exceeded expected participation, expanding STEM access for thousands of students—many of whom wouldn't have been reached without this support.

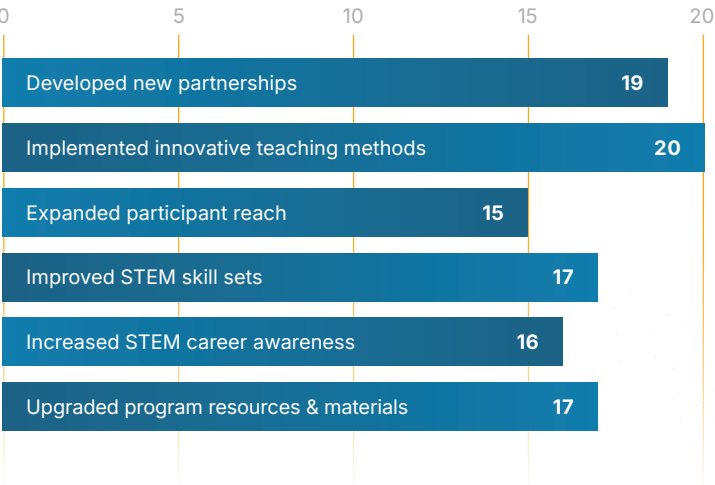


**23,000+**  
individuals participated  
in LCSA-sponsored events



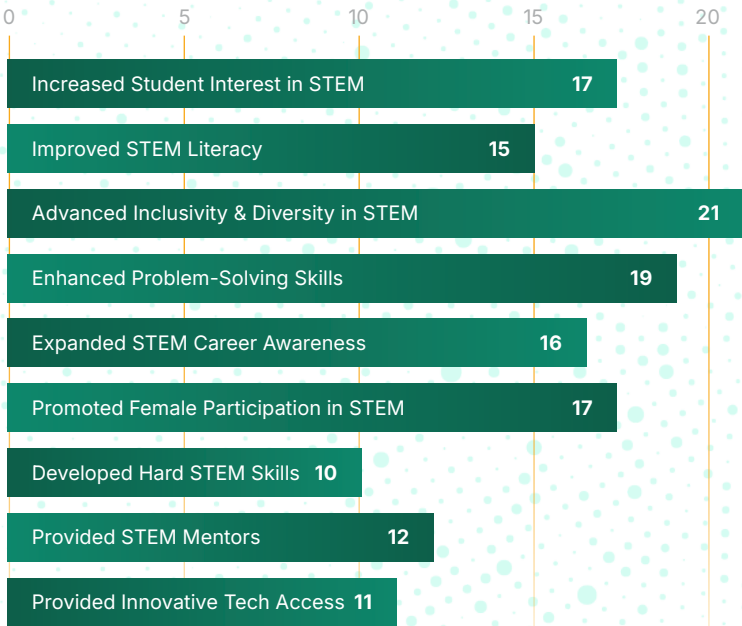
# Transformative Growth Made Possible by Grant Support

Since receiving 2024 grants, nearly all 25 organizations reported positive outcomes—24 saw three or more improvements, and 20 adopted innovative teaching methods—demonstrating the grants’ strong impact on growth and transformation.



# Creating Positive Community Impact Through STEM Programming

STEM programs drove change by sparking student interest, promoting diversity, and fostering career awareness and mentorship, making a lasting impact through education and innovation.



# K-12 IN-SCHOOL PROJECT-BASED LEARNING (PBL)

## Adopt-a-Middle School Program

The Adopt-a-Middle School program fosters long-term, sustainable partnerships between local businesses and middle schools, creating mutually beneficial relationships that enhance students' educational experiences and positively impact their future outcomes.

“Easily one of the best experiences I’ve ever had as a teacher. I learned so much and have been able to talk to my students already about what I learned and how it could benefit them in the future.”

– Participating Educator

**12** participating districts

**58** participating educators



**~6,000** total students impacted

**23** business partners



Learn More (Video):  
[LancasterStem.org/EE-2024](https://LancasterStem.org/EE-2024)

## Educator Externship

Lancaster Farming and Susquehanna Printing offered educators a work-embedded learning experience, showing how their content applies in the workplace. Educators use this to create lesson plans that connect classroom learning to real-world applications.

Educators from **5** School Districts

**Lancaster Farming**



# CAREER EXPLORATION

## INSPIRE LANCASTER

Inspire Lancaster connects individuals to meaningful career pathways by supporting a wide range of industries vital to regional economic growth and workforce development, including:

- Agriculture, Food, and Natural Resources
- Architecture and Construction
- Arts, A/V Technology, and Communications
- Business Management and Administration
- Education and Training
- Finance
- Government and Public Administration
- Health Science
- Hospitality and Tourism
- Human Services
- Information Technology
- Law, Public Safety, Corrections, and Security
- Manufacturing
- Marketing
- STEM



**84** businesses engaged

**21** educational institutions joined

**30** educators participated

**100** students reached



Learn More:  
[InspireLancaster.org](https://InspireLancaster.org)

## Out-of-School STEM Learning

**18**

Out-of-school STEM programs funded

**12,661**

students engaged in LSCA-funded summer STEM programs



## Healthcare Career Awareness Program/Penn State College of Medicine & ProWellness



**PennState**  
PRO Wellness

**20** students participated

**14** community healthcare partners involved

**95%** increased healthcare career awareness

**69%** more likely to pursue healthcare careers



# Diversity, Equity, Inclusion and Belonging in STEM

## Momentum Coding Academy

A six-week program for high school students featuring STEM mentorship, college credit, and training in programming, web development, and professional skills.

### PARTICIPATING PARTNERS

- Cargas
- Clark Associates Inc
- Elizabethtown College
- Millersville University
- Precision Cobotics

“The program was interactive and hands on which made it more fun. Also, the instructors mixed up the groups, so we got to meet new friends, and learn to collaborate. It was a fantastic program!”

– Student Participant



**30** students enrolled

**96%** passed success rate

**87%** earned an A or B grade

**100%** gained STEM career knowledge

“One student in the program decided to change their career path and pursue a degree in computer science as a result of this program.”

– Etown Faculty Member

“I enjoyed the fast pace of learning and how the curriculum covered a wide range of topics while also giving the students enough knowledge and experience to help them learn more in their own time.”

– Classroom Assistant

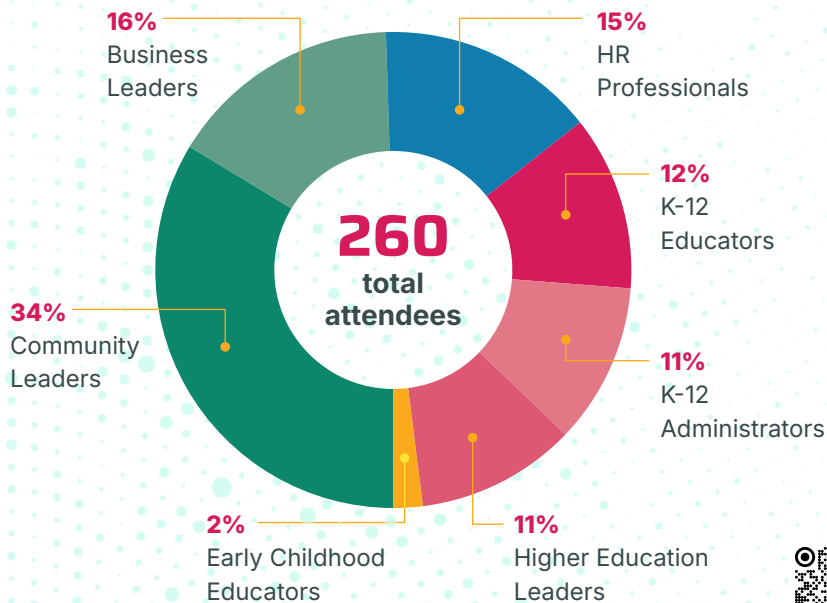


## Workforce 2030 Summit

The Workforce 2030 Summit is a flagship event designed to bring together key stakeholders to address the future of workforce development in Lancaster County.

This event serves as a platform for collaboration among community and business leaders to explore solutions that will shape the workforce for generations to come.

The summit's core goals are to learn, network, and collaborate, providing a space where participants can share insights, build relationships, and work together on actionable strategies.



## 100%

Respondents are likely to join future LCSA Workforce Summits and felt the Workforce 2030 Summit met their expectations.

*\* Survey responses were collected from 54 participants.*



Learn More (Video):  
[LancasterStem.org/WF2030-2024](https://LancasterStem.org/WF2030-2024)

**Lancaster County STEM Alliance is guided by an esteemed group of leaders from education, business, and community organizations throughout Lancaster County, Pennsylvania.**

## **LCSA Advisory Board**

**Robert Krasne**, *Chair*, Chair & CEO, Steinman Communications; Co-Chair, The Steinman Foundation; Chair, The Steinman Institute for Civic Engagement

**Dr. Barbara Altmann**, President, Franklin & Marshall College

**Dr. Michael Badriaki**, Superintendent, Lancaster Mennonite School

**Sam Bressi**, President & CEO, Lancaster County Community Foundation

**Dr. Robin Felty**, Superintendent, Manheim Township School District

**Richard Heisey**, Vice President of Product Engineering, CNH Industrial America

**Jess King**, Executive Director, The Steinman Institute for Civic Engagement

**Willonda McCloud**, President & CEO, Bright Side Opportunities Center

**Dr. Keith Miles**, Superintendent, School District of Lancaster

**Vanessa Philbert**, CEO, Community Action Partnership of Lancaster County

**Anna Ramos**, Executive Director, Lancaster County Workforce Development Board

**Lisa Riggs**, Senior Managing Director, Economic Growth Strategy & Partnerships, Team PA

**Dr. Pedro Rivera**, President, Thaddeus Stevens College of Technology

**Ezra Rothman**, President, EDC Lancaster County

**Michael Shirk**, CEO, The High Companies

**Matthew Stem**, Executive Director, Lancaster-Lebanon IU 13

**Dr. Brian Troop**, Superintendent, Ephrata Area School District

**Heather Valudes**, President & CEO, Lancaster Chamber of Commerce

**Shane Zimmerman**, President, Steinman Communications; President, The Steinman Foundation

**Dr. Jon Zuo**, President & Chief Technical Officer, Advanced Cooling Technologies, Inc.

## **LCSA Staff Members**

**Dr. Lauren Miller**, Foundation Executive Director

**Adrienne Epler**, Foundation Operations Coordinator

**Andrew Garner**, Foundation Program Coordinator



[STEM@SteinmanFoundation.org](mailto:STEM@SteinmanFoundation.org)



[LancasterSTEM.org](http://LancasterSTEM.org)